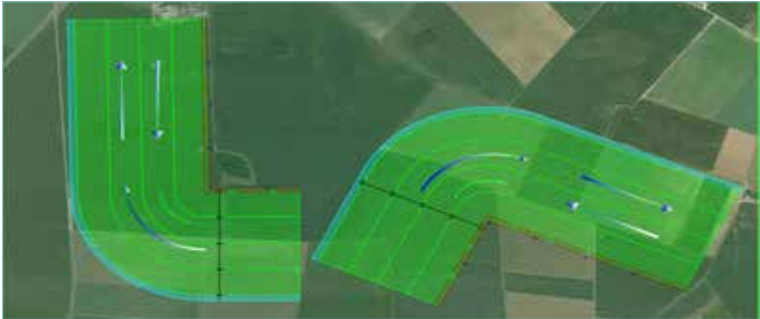
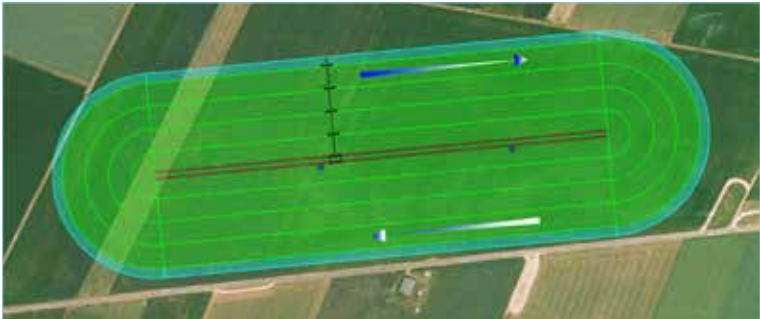
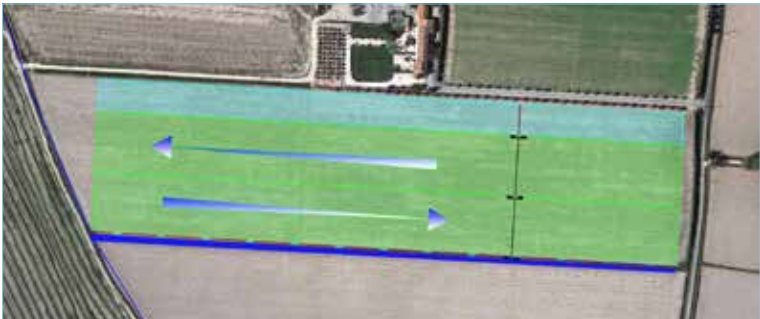
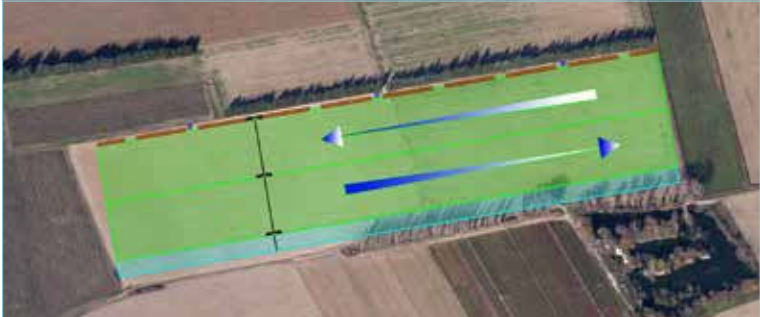


# THE LATERAL MOVE

## Irrifrance Lateral Moves



# THE LATERAL MOVE

## RM 2 - 4 L



### CART CONTAINING

- 1 axle with 2 UMC gear-motor + 4 wheel gearboxes UMC.
- 4 wheels 14,9 x 13 x 24 fitted on articulated system to increase the ground sticking
- 1 large axle allowing the installation of the generator and diesel fuel or fertilizer tank.
- 1 double hydraulic feeding of the spans to allow their installation on each side of the drive unit.
- 1 hydraulic feeding with swivelling elbow (no necessary operating at inversion).
- 1 stop system at the end of the plot and automatical reverse.
- 1 main control panel.



## RM 2 - 4 PL



### CART CONTAINING

- 1 axle with 2 UMC gear-motor + 4 wheel gearboxes UMC.
- 4 wheels 14,9 x 13 x 24 fitted on articulated system to increase the ground sticking.
- 1 mixed generator (alternator + diesel fuel motor + pump) intended to electrical and hydraulical feeding.
- 1 tank storage for diesel fuel supply with capacity on request.
- 1 articulated pumping arm intended to feed spans by sucked-in water in channels.
- 1 lifting of pumping arm thanks to a manual winch to facilitate strainer's handling and cleaning
- 1 automatical adjustment to adapt the height of strainer according to the water level changings.
- 1 electrical primer pump (for the pipes feeding before the pump starting).
- 1 manual declutching of the pump to operate lateral move without water.
- 1 double hydraulic feeding of the spans to allow their installation on each side of the drive unit.
- 1 stop system at the end of the plot and automatical reverse.
- 1 main control panel

