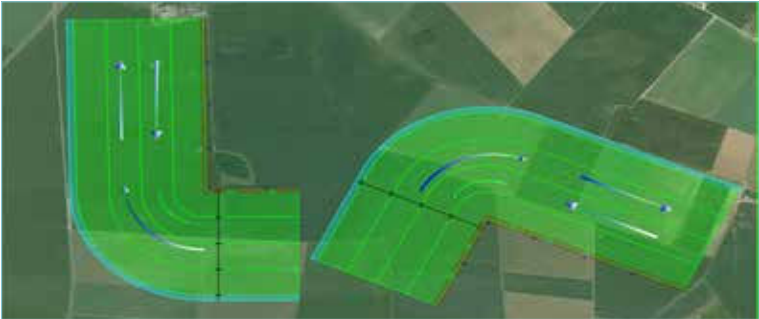
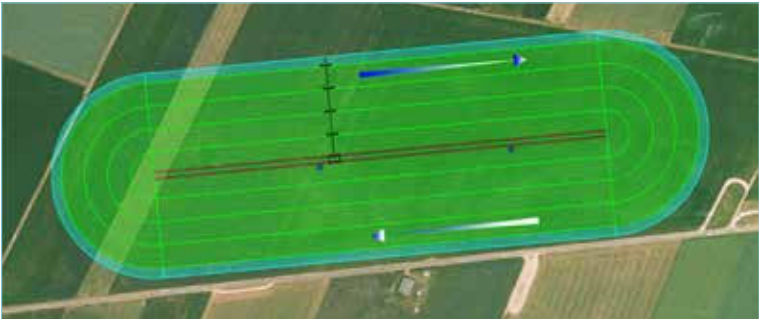
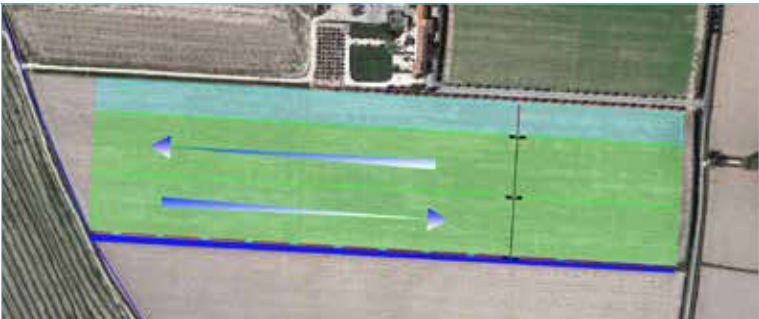
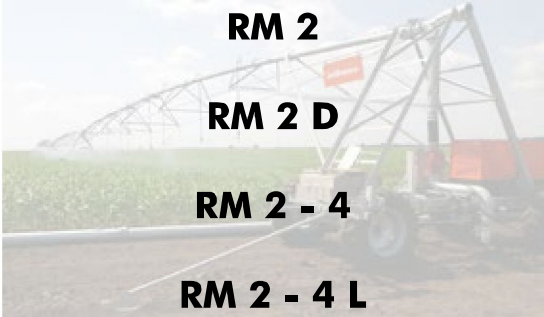
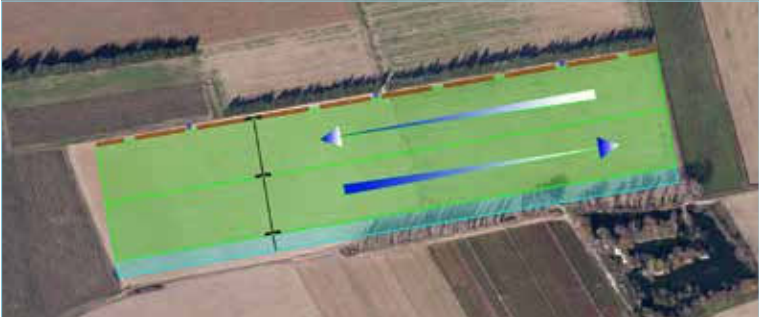


THE LATERAL MOVE

Irrifrance Lateral Moves



THE LATERAL MOVE

RM 2



CART CONTAINING

- 1 axle with 1 UMC gear-motor + 2 wheel gearboxes UMC.
- 2 wheels 14,9 x 13 x 24
- 1 pulling system of PE hose and power feeding cable.
- 1 hydraulic feeding with swivelling elbow (no necessary operating at inversion).
- 1 stop system at the end of the plot and automatic reverse.
- 1 main control panel.

RM 2 - 4



CART CONTAINING

- 1 axle with 1 UMC gear-motor + 2 wheel gearboxes UMC.
- 4 wheels 14,9 x 13 x 24 fitted on articulated system to increase the ground sticking
- Possible hydraulic feeding by both sides of axle.
- Liquid filling (ballisting) increased by the water volume set in the axle.
- 1 stop system at the end of the plot and automatic reverse.
- 1 main control panel.

